

CARDPACK CP 40

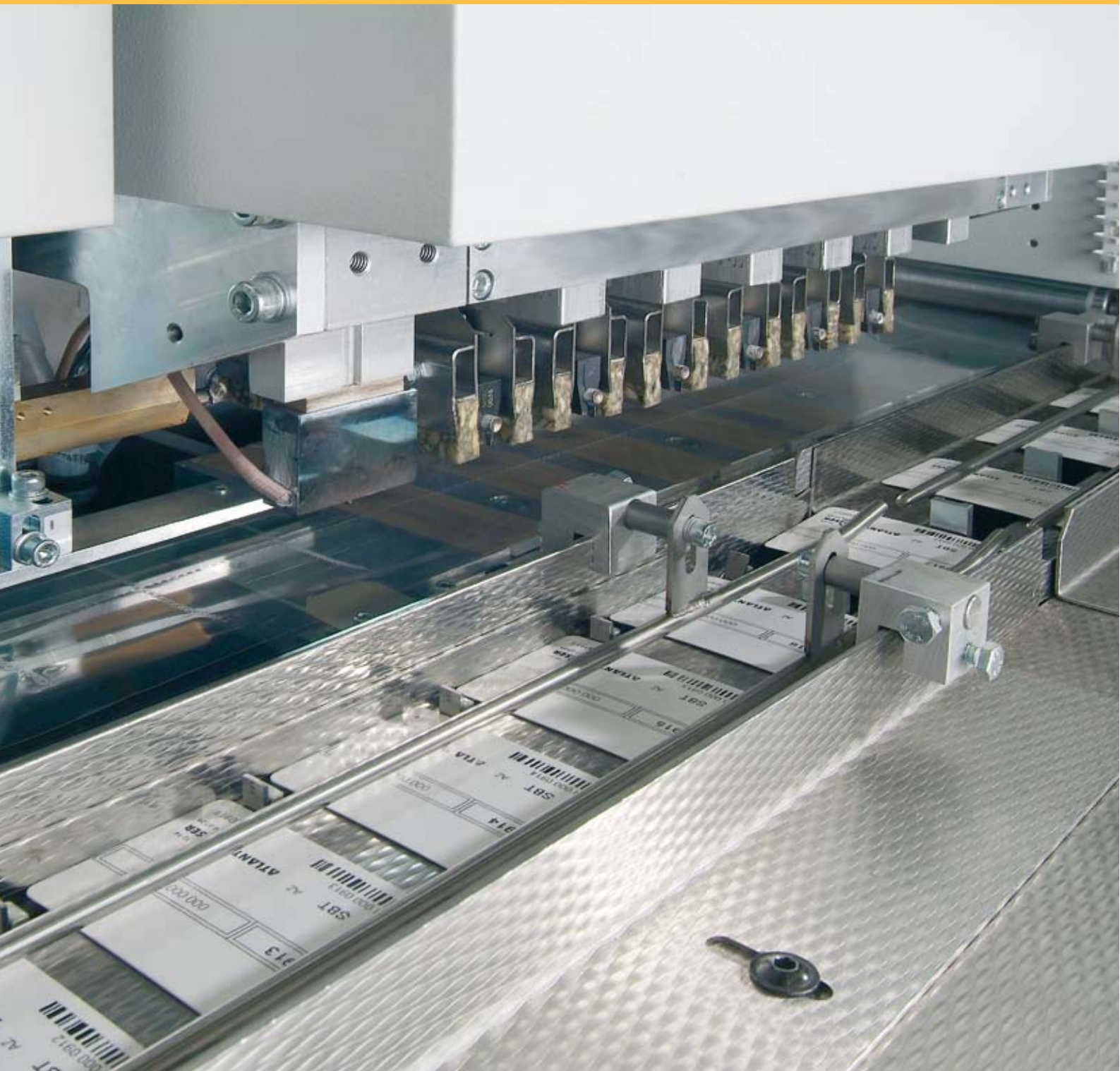
High Speed Card Wrapping System



CARD SYSTEMS

DOCUMENT & PRODUCT IDENTITY

IMPACT NUMBERING





High Speed Card Wrapping

- Quality at fast production rates of up to 40,000 cards/hour
- CR 80 card format
- Wrapping of single cards and chains of cards
- Full process monitoring
- Secure thermal welding process
- Multiple feeding options for cards and leaflets into one pack
- Camera control for serial number, product tracking, production control and/or protocol input
- Film folding device within machine allows the use of lower cost flat film rolls
- Six pouch transverse sealings in a single step
- Adaptation setting for sealing distance offers the flexibility for packaging of larger products
- Optimal access to and easy change of sealing bars due to separate welding of transverse and longitudinal sealings
- All sealing patterns customizable to specific requirements



CARDPACK CP40 - High Performance Card Wrapping



1. Material Feeder Unit

For the majority of applications, the CP 40 is fitted with two feeder units. Cards and inserts are fed into the CP 40 in stacks. Two horizontal feeder units with feeder conveyors are used.

All variations of the feeder units feature duplicate card and missed card control.



2. UNIQUE VISION Camera

The UNIQUE VISION camera system provides seamless monitoring and guarantees process security. The monitoring system reads and verifies process variable data, such as serial numbers or bar codes.

The system performs online matching of the read-back information with the data in a file.

The CP 40 can accommodate up to four camera systems, providing permanent data verification, quality monitoring and process control. The data recorded during processing also becomes part of the production log.



3. Film Feeder Unit

The card packaging system uses low-cost BOPP flat film. As the film comes off the spool, a photo sensor monitors the spool diameter. In the film folding unit, the flat film is pulled across a folding triangle and shaped into a half-tube.

The half-tube then passes under a perforation wheel which punches the tear-off perforation along the direction of feed.

The system can also process pre-printed film optionally.



4. Transverse Thermal Welding Unit

In the transverse thermal welding unit, six foil pouches are welded into the half-tube formed by the film in a single step.

The separation perforation between the individual pouches guarantees easy separation of the pouch chains.

An option is available to produce sealing bars featuring customer-specific security characteristics.



CARDPACK CP 40

The perfect complement to high-speed card personalization

- standardized production software
- synchronized production processes
- high performance



5. Card Insertion Unit

Up to the card transfer point, the cards are moved along using transport chains and toothed belts.

In the card insertion unit, the cards are inserted laterally into the pouches previously formed in the film tube by transverse thermal welding sealings. Two transverse roller wheels ensure accurate insertion of the cards into the pouches.



6. Longitudinal Welding

The longitudinal welding unit seals the remaining front opening of the film pouch. The strip of foil removed in the process is wound onto a spool.

After the final longitudinal weld, the cards and the required inserts are complete and securely locked inside the pouches.



7. Separation Unit

The continuous chains of pouches may be separated into stacks of 5, 10, 15, 20, 25 or up to 50 cards, as required.

Separation is performed accurately by tearing through the perforated transverse sealing. Separation into single cards may be implemented optionally.



8. Output Conveyor with Stacking System

The separated chains of pouches are stacked cross-wise (zig-zag) by the stacker system. The direction of tilt of the first product may be selected. Individual cards are discharged directly via the output conveyor.



9. Host PC

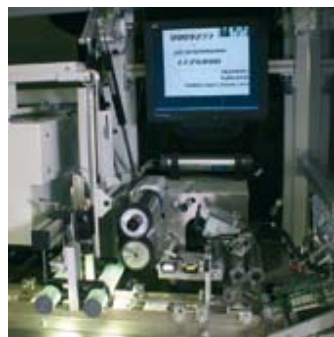
Simple operation and configuration of production jobs via the central host PC. Touch screen installed on a swivel arm optional.

Finishing modules – optional equipment



10. Over-wrapping

Over-wrapping of tube pouches using the film welding unit.



11. Camera Systems 1-3

UNIQUE VISION camera systems for sequence control, positioning after feeder unit.



12. Camera System 4

Camera for sequential control, e.g. after the over-wrapping unit.



13. Labeling Station

Labeling station with label printer and output conveyor belt.

CARDPACK CP 40 – efficient performance and functionality

Pricing pressure, the need to lower costs, reduced supply times and increasing production and quality requirements are the realities of the market with which international card manufacturers must meet.

These requirements also directly impact the production capacity of equipment manufacturers. Atlantic Zeiser has met these challenges and has combined functionality, performance and cost-efficiency all in one card packaging system. The design of the CARDPACK CP 40, assures the profitability and competitiveness of our customers.

Performance – the CARDPACK CP 40 will wrap up to 40,000 products/hour. To meet specific customer requirements, packaging may be for single cards (with or without insert) or for chains of cards consisting of up to 50 cards (with Leporello fold). Low-cost BOPP flat film is used for the wrapping foil: during the wrapping process, the film passes over a folding triangle to be shaped into a half-tube. Thermal welding is then used to create foil pouches in the half-tube. All four longitudinal and transverse welding sealings meet the strictest security specifications. Special sealing patterns and security features may be adapted to customer requirements. The perforation on each card pouch makes it easy to open the card wrapping.

Optional features are available. System solutions for different applications can be configured by adding over-wrapping units, camera-based monitoring, inkjet printers and labeling units with thermal label printers. Additionally a red thread opening feature is available.

Comprehensive equipment for optimum functionality:

CARDPACK CP 40 system components:

- up to 3 feeder units with feeder conveyor belts
- card transport section
- foil feeder
- transverse thermal welding unit
- card insertion unit
- longitudinal thermal welding unit
- separator unit
- stacking system
- output conveyor belt
- process control unit

Components for product control and process monitoring:

- up to 4 UNIQUE VISION camera systems
- AZ controller for product control

Optional equipment:

- inkjet printer for product marking
- over-wrapping unit for tube pouches
- label printer
- output conveyor belt



ATLANTIC ZEISER GmbH · Bogenstraße 6-8 · 78576 Emmingen Germany · Phone +49 7465 291-0 · Fax +49 7465 291-166 · sales@atlanticzeiser.com

ATLANTIC ZEISER Inc. · 15 Patton Drive West Caldwell · New Jersey 07006 USA · Phone +1 973 228-0800 · Fax +1 973 228-9064 · sales@atlanticzeiserUSA.com

ATLANTIC ZEISER Ltd. · 53 Central Way · Andover, Hants. SP10 5 AL GB · Phone +44 1264 324-222 · Fax +44 1264 324-333 · sales@atlanticzeiserUK.com

ATLANTIC ZEISER s.r.l. · Via Varesina 174 · 20156 Milano Italy · Phone +39 02 33497-740 · Fax +39 02 33401-413 · info@atlanticzeiser.it

ATLANTIC ZEISER S.A.S. · 21-23, rue Eugène Dupuis-Europarc · 94043 Créteil Cedex France · Phone +33 1 156711309 · Fax +33 1 43774430 · info@atlanticzeiser.fr

ATLANTIC ZEISER S.A. · Dr. Esquerdo, 112 · 28007 Madrid Spain · Phone +34 91 4336661 · Fax +34 91 5528916 · az_spain@atlanticzeiser.es

www.atlanticzeiser.com

Technical Specifications CARDPACK CP 40	
Dimensions	Length: 7,700 mm 303.1 inches Width: 900 mm 35.4 inches (without feed belt) Height: 2,100 mm 82.7 inches
Card Format	CR 80 as per ISO/IEC 7810 54 x 85.6 mm 2.125 - 3.375 inches
Card Thickness	0.76 mm (range from 0.25 - approx. 1.6 mm)
Throughput	Up to 40,000 cards/h (667 cards/min) depending on: card, foil and leaflet material labeler and over-wrapping print quality of sequence number
Foil Material	Flat, biaxial oriented Polypropylene (BOPP) foil Preprinted foil (option) Print mark control for synchronization of preprint and card bags (option)
Weight	Approx. 3,000 kg
Noise	≤ 76 dB (A)
Power Supply	400 VAC / 50 or 60 Hz / three phases + PE, 15 kVA
Ambient Temperature	10 - 38 °C
Relative Humidity	20 - 80% at 25 °C not condensing
Compressed Air Supply	6 bar
Options	- Additional feeders - Extended horizontal feed belts - UNIQUE VISION camera control systems - Customized sealing patterns - Over-wrapping unit - Labeler and label printer