

PROOFMASTER

Quality Reporting of Personalized Information on Cards



CARD SYSTEMS

DOCUMENT & PRODUCT IDENTITY

IMPACT NUMBERING



PROOFMASTER – Verification and Reporting

The requirement and expectation is quality. The increasing demand for higher standards of quality presents card manufacturers with a new challenge. Card personalization, gift cards in particular, production orders now require quality, verification and detailed reporting. It is now common for job requirements to include this additional quality for card verification. The PROOFMASTER provides protocols capable of meeting these new market demands.

In this specialized area, Atlantic Zeiser can offer a commercially effective, high-performance solution – the PROOFMASTER. This system operates independently from the card personalization machine already in place. A magnetic stripe reader and the UNIQUE VISION camera system read back the data previously applied to the card. The data is then matched in the central system controller and checked for accuracy. This process provides sequential control and duplicate-card control as well as checking the correlation between printed and encoded information. Extensive data logging options are offered by this verification system.

**PROOFMASTER -
reduces post-processing costs and eliminates distribution of bad/duplicate cards!**



Stand-alone

The PROOFMASTER provides stand-alone offline quality control of personalized data for a wide range of card formats.

Documentation

The PROOFMASTER generates reports designed to customer requirements. Five different types of reports are available:

1. Final report: for use by customer and manufacturer
2. Verification report: overview of all events of the process
3. OK file: listing of all good cards
4. NOK file: listing of all bad cards, for supplementary production
5. OUT file: listing of all not yet produced cards

Monitoring

Personalized data is read by the integrated magnetic stripe read head, and/or read back by the UNIQUE VISION verification system.



For a single pass, up to 12 criteria can be retrieved from the following:

- encoded data stored on up to three magnetic tracks
- alphanumeric texts
- bar codes
- scratch-off labels/foils



Depending on customer requirements, the actual data read in this process is then available for use in a wide range of verification steps:

- sequential control
- duplicate-card control
- consistency with data record
- consistency between different sets of data on the same card

The acquired actual data may be verified against a data record, fixed data or against fixed criteria. In matching data records, the system is able to access data files generated by the Atlantic Zeiser CARDLINE or CARDLINE VERSA. Other types of source data files may also be used.

The PROOFMASTER data matching feature distinguishes between two categories of errors: the 'warn' type, where faulty cards are fed to the bad-card hopper for supplementary production, and the 'fail' type, which causes the machine to stop and allows the machine operator to intervene in the verification process.

High-performance

The economic PROOFMASTER is designed for high performance. With a maximum production rate of up to 25,000 cards/hour, even the biggest order volumes can be processed quickly and efficiently, while taking up a minimal footprint.

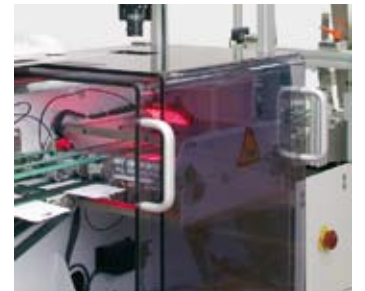
Functional

The heart of the PROOFMASTER is the production computer: designed for high speeds, it operates in real-time and combines all checking and verification operations.



All read-back components in the system communicate directly with the central production computer, which also keeps the operator informed about the status of checking and verification steps via the central, Windows-based interface. The interface includes indicators for alarms and error messages.

Optical sensors monitor the card transport unit and ensure effective processing.



Compatible

The user interface features a simple layout and easy operation, in line with the design philosophy behind other AZ products.

PROOFMASTER - compact and functional

Standard equipment:

- Vertical friction feeder
- Friction transport section
- Diverter gate for "good/bad cards"
- AZ controller with full capabilities

Optional equipment:

- Magnetic reader, embedded in the feeder (reading from top)
- UNIQUE VISION camera system mounted on friction conveyor assembly (read-back may be from top or bottom)
- Transportation extension
- Batch separator unit for good cards
- Output conveyor for good cards
- Output conveyor for bad cards
- Hopper for bad cards

ATLANTIC ZEISER GmbH · Bogenstraße 6-8 · 78576 Emmingen Germany · Phone +49 7465 291-0 · Fax +49 7465 291-166 · sales@atlanticzeiser.com

ATLANTIC ZEISER Inc. · 15 Patton Drive West Caldwell · New Jersey 07006 USA · Phone +1 973 228-0800 · Fax +1 973 228-9064 · sales@atlanticzeiserUSA.com

ATLANTIC ZEISER Ltd. · 53 Central Way · Andover, Hants. SP10 5 AL GB · Phone +44 1264 324-222 · Fax +44 1264 324-333 · sales@atlanticzeiserUK.com

ATLANTIC ZEISER s.r.l. · Via Varesina 174 · 20156 Milano Italy · Phone +39 02 33497-740 · Fax +39 02 33401-413 · az@atlanticzeiser.it

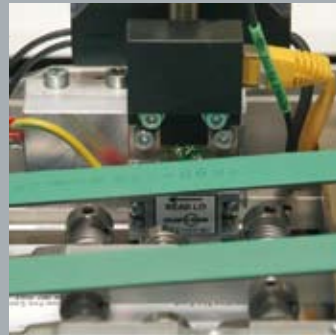
ATLANTIC ZEISER S.A.S. · 21-23, rue Eugène Dupuis-Europarc · 94043 Créteil Cedex France · Phone +33 1 156711309 · Fax +33 1 43774430 · info@atlanticzeiser.fr

ATLANTIC ZEISER S.A. · Dr. Esquerdo, 112 · 28007 Madrid Spain · Phone +34 91 4336661 · Fax +34 91 5528916 · az_spain@atlanticzeiser.es

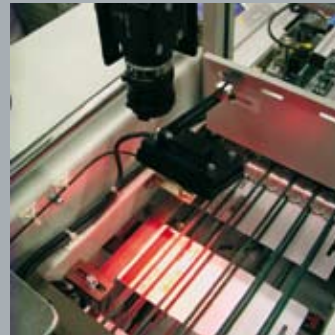
www.atlanticzeiser.com



Vertical Feeder



Magnetic Stripe Reader



UNIQUE VISION Verification Camera



Diverter Gate

Technical Specifications

Card Format	CR 80	Thickness:	0.25 - 1.00 mm	9.85 - 39.4 mil
		Length:	according to ISO 7810 / ID-1	
		Width:	according to ISO 7810 / ID-1	
			transported with small side ahead	
	Hangtags	Thickness:	0.25 - 1.00 mm	9.85 - 39.4 mil
		Length:	85.4 mm	3.36 inches
		Width:	54 - 177.8 mm	2.1 - 7.0 inches
	Odd shaped cards	On request		
Card Material	PVC, PET*, PETG*, ABS, Styrene, Paper board *card thickness might be limited			
Card Surface	Not high gloss			
Throughput	Up to 25,000 cards/h (CR 80 and hangtags < 6 inches) Up to 20,000 cards/h (hangtags > 6 inches)			
Dimensions	Length:	1,700 mm	67.0 inches	
	Width:	800 mm	31.5 inches	
	Height:	1,650 mm	65.0 inches	
Weight	Approx. 325 kg			
Noise	≤ 76 dB (A)			
Power Supply	230 VAC ± 5% / 16 A / 50...60 Hz / one phase + neutral + PE			
Ambient Temperature	10 - 30 °C			
Relative Humidity	Max. 20 - 80% at 25 °C not condensing			