

# CARDMASTER

Pre-paid Scratch Card Personalization System



CARD SYSTEMS

DOCUMENT & PRODUCT IDENTITY

IMPACT NUMBERING

**NEW  
FEATURES**



# CARDMASTER – Pre-paid Scratch Card Personalization System

Since the end of the 90s Atlantic Zeiser has installed card personalization solutions worldwide for many different kinds of applications. Hallmarks that make Atlantic Zeiser stand out from the crowd as a competent partner are its constant ability to adjust to new requirements within short response times. Not without reason, Atlantic Zeiser is the leading global supplier of system solutions in pre-paid card personalization.

Based on its many years' experience, Atlantic Zeiser has bundled its extensive know-how specifically for the pre-paid card market. With its CARDMASTER Atlantic Zeiser is offering an optimal solution in addition to the proved, modular CARDLINE personalization system, which is ideal in both counts – either to start into the pre-paid card market or secure production as a back-up system.

**CARDMASTER** – the leading personalization system for the pre-paid card market that offers decisively more:

- Optimal business entry for start-up companies
- Functionality
- Value for money
- Optimal and easy handling
- Flexibility
- Top print quality



## 1. Vertical Feeder

The vertical feeder is designed for CR80 card formats. More than 600 cards (0.76 mm/ 30 mil) can be placed into the vertical magazine. Friction single feeding and ultrasonic double card detection guarantee trouble-free dispensing of cards.

The vertical feeder can be topped up at any time during the production run without stopping the machine.

It is able to handle both paper and plastic cards (from 0.25 to 1 mm/9.85 - 39.4 mil).



## 2. Inkjet Printer

In its maximum configuration alternatively up to four single inkjet print heads are used to mark the cards. One print head is able to print up to four lines in an area of maximum 8.5 mm (0.33 inches) height.

**NEW**

### OMEGA 36i with SmartCure 36i UV Curing Device

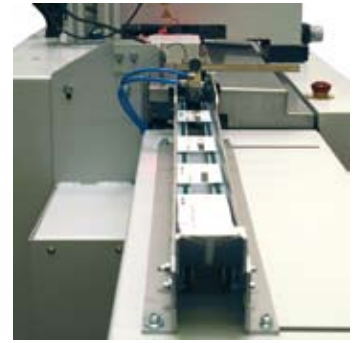
Integrate the latest generations of inkjet printers into your CARDMASTER. The OMEGA 36i drop-on-demand inkjet printer provides a print quality of 360 dpi and speeds of up to 15,000 card/h ensuring optimal readability. Completed by the energy-saving LED based SmartCure 36i UV curing device top print results, high scratch

## CARDMASTER – cost effective and reliable card personalization

- Up to 15,000 cards/h (label application)
- Easy handling due to proven controller platform
- Auto remake / in sequence production
- Up to 4 inkjet systems
- Camera verification
- Hot stamping
- Labeler
- Label verification system

Atlantic Zeiser – join the expertise of the market leader in pre-paid scratch card personalization





and chemical resistance can be achieved for validity features, serial numbers or bar codes. For PIN numbers to be covered with hotfoil the OMEGA printer can be combined with an additional single print head.

### 3. Camera Verification

The integrated inspection camera system, UNIQUE VISION, checks all of the relevant printed data. Both OCR fonts and bar codes can be read back. The size of the read field covers the entire CR80 card. The camera image is displayed on the production monitor.

### 4. Security

Blinds between the inkjet and the label/hot stamping application secure the whole process to its maximum.

### 5. Hot Stamping

Information that needs to be protected is concealed by a scratch-off coating.

A hot stamping process is used to apply the scratch coating. The maximum patch size is defined on an area of 10 x 50 mm (500 mm<sup>2</sup>). Exact positioning of the hot stamped coating is achieved by mechanical movement of the entire hot stamping unit. The max. speed for the hot stamping process is up to 10,000 cards/h.

Cross foil feeding minimizes the foil usage.

### 6. Labeler (optional)

Alternatively, information that needs protecting can also be concealed with security labels.

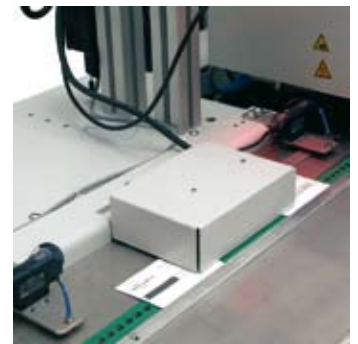
The optionally integrateable labeler is designed to enable various label locations on the card at lowest costs. Labels can be applied at speeds of up to 15,000 cards/h.

### 7. Label Camera Verification

An additional UNIQUE VISION camera verification system checks the applied label for presence, positional accuracy and any significant damage.

### 8. Shingle Delivery/ Reject Gate

Cards that have been processed without error are transferred to a 800 mm (31.3 inches) long horizontal shingle delivery.



Cards with incorrect data or a bad camera reading are filtered out into a lockable bad card box, so there are no gaps at all production speeds.

### 9. Host-PC and Modes of Operation

The Windows-based user interface offers the operator full control of individual units and settings.

Machine setup is performed in jogging mode. The speed in production mode can be selected within the range of 1,000 to 15,000 cards/hour. Three production modes are available for any remake production that is required.



ATLANTIC ZEISER GmbH · Bogenstraße 6-8 · 78576 Emmingen Germany · Phone +49 7465 291-0 · Fax +49 7465 291-166 · sales@atlanticzeiser.com

ATLANTIC ZEISER Inc. · 15 Patton Drive West Caldwell · New Jersey 07006 USA · Phone +1 973 228-0800 · Fax +1 973 228-9064 · sales@atlanticzeiserUSA.com

ATLANTIC ZEISER Ltd. · 53 Central Way · Andover, Hants. SP10 5 AL GB · Phone +44 1264 324-222 · Fax +44 1264 324-333 · sales@atlanticzeiserUK.com

ATLANTIC ZEISER s.r.l. · Via Varesina 174 · 20156 Milano Italy · Phone +39 02 33497-740 · Fax +39 02 33401-413 · az@atlanticzeiser.it

ATLANTIC ZEISER S.A.S. · 21-23, rue Eugène Dupuis-Europarc · 94043 Créteil Cedex France · Phone +33 1 156711309 · Fax +33 1 43774430 · info@atlanticzeiser.fr

ATLANTIC ZEISER S.A. · Dr. Esquerdo, 112 · 28007 Madrid Spain · Phone +34 91 4336661 · Fax +34 91 5528916 · az\_spain@atlanticzeiser.es

[www.atlanticzeiser.com](http://www.atlanticzeiser.com)

Technical Specifications			
Card Format	Thickness:	0.25 - 1.00 mm	9.85 - 39.4 mil
	Length:	85.6 mm	3.375 inches
	Width:	54 mm	2.125 inches
Throughput	Labeling:	up to 15,000 cards/h	
	Hot stamping:	up to 10,000 cards/h	
Dimensions	Length:	4,100 mm	161.5 inches (incl. shingle delivery)
	Width:	1,000 mm	39.4 inches
	Height:	1,860 mm	73.2 inches
Weight	Approx. 1,600 kg		
Power Supply	400 VAC ± 5% / 50 Hz or 60 Hz / three phases + neutral + PE / 4.8 kVA		
Ambient Temperature	15 - 30 °C		
Relative Humidity	20 - 80% at 25 °C - not condensing		
Compressed Air Supply	7 bar		
Air Consumption	500 l/min		